



1

INDUSTRY SERVED

- Chemical and petrochemical
- Power
- Pumps and valves
- Food processing
- Industrial machinery

PRODUCTION TECHNOLOGY

- Furan form line
- Casting up to 800 kg parts
- Dimension up to ø1600, max. length 2000 mm

CASTING QUALITY

- Tolerance according to EN ISO 8062
- Surface quality according to DIN EN 1559, EN 1371-1
- Volume quality according to ASTM E446
- Certificates according to EN 10204

CASTING MATERIALS

- Corrosion-resistant stainless steel
- Heat-resistant steel
- Duplex/Super Duplex steel
- Ni-Based steel

ADDITIONAL SERVICES

- Custom pattern production/modification
- Finished or rough machining
- Heat treatment

MELTING EQUIPMENT

- 3 × induction furnace – capacity 2 × 0.5 t, 1 × 2.0 t

BACKGROUND

S+C Alfanamet has been casting alloy steel since Schmidt+Clemens Kaiserau built the Trsice foundry in 1997 as part of the worldwide S+C Group.



Steel foundry S+C Alfanamet is certified according to

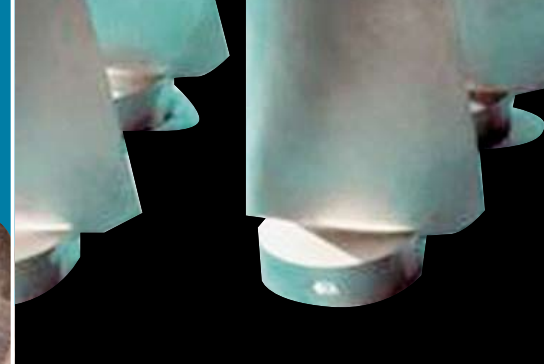
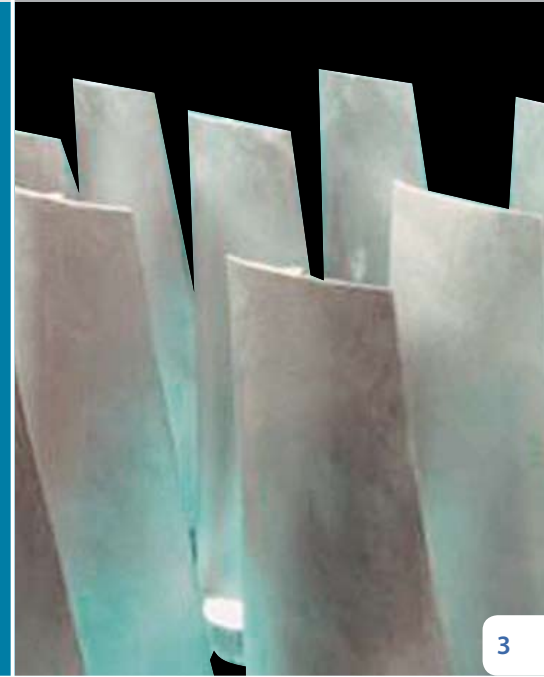
ISO 9001:2000
direction 97/23/EG
KTA 1401/Nuclear plants



2

LOW-ALLOYED STEEL		Chemical composition in %											
Material no.	Identification	C	Si	Mn	P max	S max	Cr	Ni	Mo	V	W	N	Other
1.0619	GP240GH	0.20	0.45	0.65	0.030	0.020							
1.7131	G16MnCr5	0.16	0.20	1.20	0.035	0.035	0.90						
1.3243	HS 6-5-2-5	0.92					4.15		5.10	1.85	6.35		Co 4.75
1.3343	HS 6-5-2C	0.85					4.15		5.10	1.85	6.35		

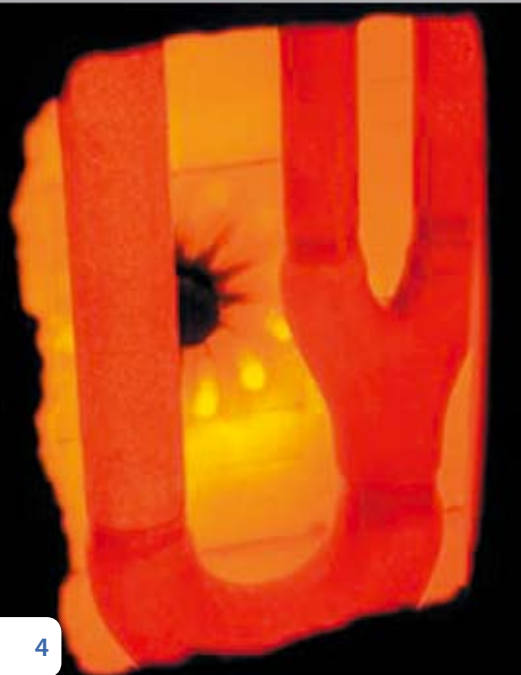
CORROSION-RESISTANT STEEL		Chemical composition in %											
Material no.	Identification	C	Si	Mn	P max	S max	Cr	Ni	Mo	V	W	N	Other
1.4008	GX7CrNiMo12-1	0.07	1.00	1.00	0.035	0.025	12.00	1.00	0.35				
1.4317	GX4CrNi13-4	0.04	1.00	1.00	0.035	0.025	13.00	4.00					
1.4340	GX40CrNi27-4	0.32	1.20	0.80	0.025	0.020	26.40	4.60		0.10			
1.4027	GX20Cr14	0.20	1.00	1.00	0.045	0.030	14.00						
1.4308	GX5CrNi19-10	0.05	1.50	1.50	0.040	0.030	18.00	10.00					
1.4309	GX2CrNi19-11	0.02	1.50	2.00	0.035	0.025	19.00	11.00				0.2	
1.4408	GX5CrNiMo19-11-2	0.05	1.50	1.50	0.040	0.030	19.00	11.00	2.00				
1.4409	GX2CrNiMo19-11-2	0.02	1.50	2.00	0.035	0.025	19.00	11.00	2.00			0.2	
1.4552	GX5CrNiNb19-11	0.05	1.50	1.50	0.040	0.030	19.00	11.00					Nb + 8xC
1.4581	GX5CrNiMoNb19-11-2	0.05	1.50	1.50	0.040	0.030	19.00	11.00	2.00				Nb + 8xC
1.4460	GX3CrNiMoN27-5-2	0.03	1.00	2.00	0.035	0.030	27.00	5.00	2.00			0.10	
1.4463	GX6CrNiMo24-8-2	0.06	1.50	1.50	0.045	0.030	24.00	8.00	2.00				
1.4470	GX2CrNiMoN22-5-3	0.02	1.00	2.00	0.035	0.025	22.00	5.00	3.00			0.15	
1.4517	GX2CrNiMoCuN25-6-3-3	0.02	1.00	1.50	0.035	0.025	25.00	6.00	3.00			0.15	Cu
1.3960	GX2CrNiMoN18-14	0.02	1.00	2.00	0.035	0.020	18.00	14.00	2.50			0.20	
Alloy 31	GX1NiCrMoCu32-87-7	0.020	0.25	0.40	0.020	0.003	28.00	30.50	6.20	0.05	0,15	0.22	Cu 1.20
Alloy 59	G-NiCr23Mo16	0.010	0.10	0.25	0.015	0.003	23.00	Rest	16.00				Cu 0.20



3

HEAT-RESISTANT STEEL			Chemical composition in %										
Material no.	Identification	C	Si	Mn	P	S max	Cr max	Ni	Mo	V	W	N	Other
1.4776	GX40CrSi29	0.40	2.50	1.00	0.030	0.020	29.00						
1.4825	GX25CrNiSi18-9	0.25	2.50	1.50	0.035	0.030	18.00	9.00					
1.4848	GX40CrNiSi25-20	0.40	2.50	1.50	0.035	0.030	25.00	20.00					
1.4852	GX40NiCrSiNb35-25	0.40	2.00	1.50	0.035	0.030	25.00	35.00					Nb 1.50
1.4852 micro	GX45NiCrSiNbTi35-25	0.45	1.50	1.00	0.030	0.030	25.00	35.00					Nb 1.50
1.4859	GX10NiCrNbSi32-20	0.10	1.50	1.50	0.045	0.030	20.00	32.00					Nb 1.00
ET 35Co	G-NiCrCoW	0.50	1.20	1.20	0.025	0.005	29.00	35.00			5.00		Co 15.00
ET 45 micro	GX45NiCrSiNb45-35	0.45	1.60	1.00	0.020	0.005	35.00	45.00					Nb 1.00
2.4879	G-NiCr28W	0.45	1.50	1.50	0.035	0.030	28.00	Rest			5.00		
Centralloy 60HT	G-NiCr25FeAl	0.45	0.01	0.10	0.010	0.003	25.50	60.00					

WEAR-RESISTANT STEEL			Chemical composition in %										
Material no.	Identification	C	Si	Mn	P max	S max	Cr	Ni	Mo	V	W	N	Other
V 105	GX350CrMo20-2	3.50	0.60	0.50	0.030	0.020	20.00		2.00				
V 804	GX350Cr28	3.50	0.80	0.40	0.04	0.030	28.00						



4



Schmidt+Clemens GmbH+Co. KG
 Edelstahlwerk Kaiserau
 Kaiserau 2, 517 89 Lindlar, Germany
 Tel.: +49 22 66 92-0, Fax: +49 22 66 92-369
 Internet: www.schmidt-clemens.com



S+C ALFANAMETAL s.r.o., koncern
 CZ-78357 Tršice č. 126, Czech Republic
 Tel.: +420 58 59 57 428
 Fax: +420 58 59 57 430
 Internet: www.alfanametel.com
 E-Mail: alfa@alfanametel.cz



Schmidt + Clemens, Inc.



Schmidt - Clemens Spain S. A. U.



Schmidt + Clemens GmbH+Co. KG
 Indian Liaison Office



Schmidt + Clemens Brasil Ltda.



Schmidt + Clemens GmbH + Co. KG
 S+C-MÄRKER GmbH



Schmidt + Clemens (Asia) Sdn. Bhd.



S+C Bowers & Jones Ltd.



S+C ALFANAMETAL s.r.o.



Schmidt + Clemens Middle East DMCC